



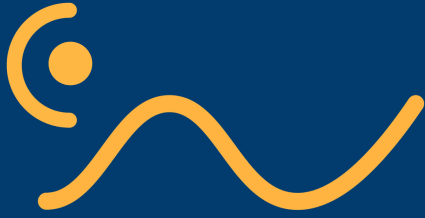
# Peter Scott Gallery Charitable Trust Chair of the Board

**Candidate pack**  
**June 2026**



**charisma**  
CHARITY RECRUITMENT

**Lancaster  
Arts**  
Where ideas, people and places connect



# CONTENTS

## **Section one - Introduction**

- Welcome from the Director, Lancaster Arts

## **Section two - About us**

- Peter Scott Gallery Charitable Trust

## **Section three - Role description**

- Role details
- Key responsibilities
- Attributes and experience

## **Section four - Terms of reference**

- Terms of reference

## **Section five - How to apply**

- How to apply

National Portfolio Organisation  
Board Members



Supported using public funding by  
**ARTS COUNCIL  
ENGLAND**

# 1

## Introduction



### A welcome from the Director, Lancaster Arts

Thank you for your interest in the role of Chair of the Board - the Peter Scott Gallery Charitable Trust (PSGCT).

At Lancaster Arts, our mission is grounded in a commitment to social and environmental justice. We believe in the power of artistic practice to inspire change, provoke critical thinking, and create shared experiences that reflect and shape our collective future.

The Peter Scott Gallery is a distinctive and valued part of Lancaster Arts, and of Lancaster University more broadly. As an Accredited Museum within a dynamic combined arts organisation, it plays a vital role in connecting artistic excellence with research, teaching, and public engagement.

As a contemporary gallery committed to interaction with visitors, we don't just do 'pictures on walls'. Instead, our work spans multiple artforms and is shaped by annual themes that respond to the world around us enabling us to bring artists, audiences, and ideas into meaningful dialogue.

We hold a remarkable and diverse collection, spanning ancient artefacts to contemporary practice, including works by major artists such as Barbara Hepworth and L. S. Lowry. Our collection is an extraordinary cultural resource, not only for the university but for the wider region and beyond, and it holds significant untapped potential for future growth, interpretation, and impact.

With our current Chair, Charles Hadcock, completing his term of leadership, the PSGCT is seeking a new Chair who can provide thoughtful leadership, uphold strong governance, and act as an ambassador for the Gallery and its ambitions.

This is a unique opportunity to contribute to a nationally recognised cultural organisation at a time of both challenge and possibility across the sector.

The successful candidate will join a dedicated Board of Trustees, and work alongside the Lancaster Arts Board and university colleagues. Together, we aim to strengthen the resilience of the Trust, support the continued development of the collection, and ensure that the Gallery remains a vibrant, inclusive and forward-looking cultural space.

I hope this role inspires you. We welcome expressions of interest from individuals who bring vision, integrity, and a passion for the arts, and who are eager to help shape the future of the Peter Scott Gallery.

We very much look forward to hearing from you.

Best wishes,

Director, Lancaster Arts

# 2

## About us



**Walking down the quays, St Ives**

(1954) by Terry Frost, oil on board, from the Irene Manton Bequest (1988)

# 2

## About Us



### About us

#### Lancaster Arts: where ideas, people and places connect

Lancaster Arts is based at Lancaster University in the north west of England and encompasses the Nuffield Theatre, the Great Hall and the Peter Scott Gallery, as well as locations on campus and in the region, in natural settings, community centres, car parks, and historic buildings.

Our artistic programme includes commissions, Creative Gatherings and artist residencies alongside our presentational programme. Almost half of our programme takes place outside our venues, especially in places where you might not expect to find it. We have a long-established artistic reputation for the creation, development and presentation of cutting-edge contemporary arts and are proud to be part of Arts Council England's National Portfolio (NPO) as a combined arts organisation.

**Our vision** is of a world where social and environmental justice drives change for our future and is inspired and provoked by artistic practice.

**Our mission** is to create the conditions for art to make change, alongside our collaborators.

Peter Scott Gallery is a core element of our combined arts organisation and houses a collection that has been developed by Lancaster University since the late 1960s. Here we care for and curate a rich and varied collection spanning thousands of years, from ancient Egypt and Greece to contemporary work created by new artists.

Our collections offer inspiration for artists and students, opportunities for research, and the chance for visitors to explore and enjoy human creativity – past and present. Visitors can experience the collections through our gallery exhibitions, arranging a behind-the-scenes visit to see works not on display, or connecting with the collections online.

The Peter Scott Gallery has been an Accredited Museum since 2009 and been a centre for contemporary art in Lancaster and the surrounding region for decades.

The Peter Scott Gallery Charitable Trust, established in 2001, is the registered charity that has full legal governance responsibilities for the Lancaster University Art Collection.

# 2

## About Us

### How we work

Lancaster Arts has adopted a thematic approach to our whole programme in order to enable a necessarily complex programme of multiple artforms that responds to and works across the whole university. The approach integrates commissions, workshops, site-specific work and artist development opportunities such as residencies, performance and exhibitions. This enables our programme to speak across artforms and through new approaches to ideas and concepts.

Our themes arise from listening to a wide range of partners, audiences and participants, academics and artists and relate to what is happening in the world today. Examples of past themes have been Women and Circus, Water, [Age & Ageing](#), [Ritual](#), [Flight](#), [Land](#), for 2026, [Dissent](#) and for 2027, this will be Time.

We have a collaborative programming team who work together to ensure a rich, diverse and varied programme throughout the year. Our themes inform the Gallery exhibition programme and also influence the acquisition strategy.

### Our collections

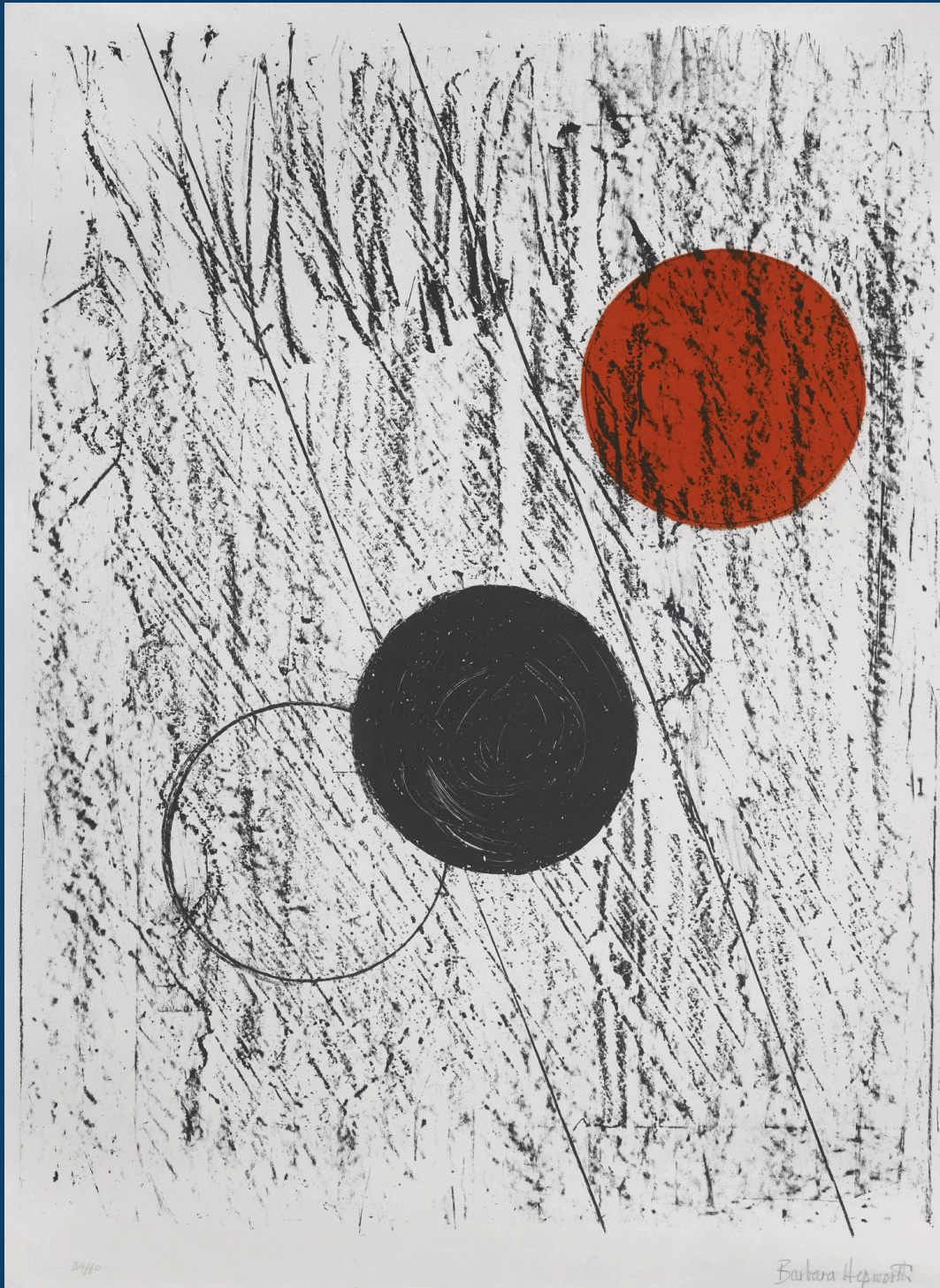
Art collections have been part of the university's DNA since our first decade, demonstrating early recognition of the vital role that university collections can play in contributing to a distinctive cultural identity and to the offer for students and staff as well as offering a rich resource for the city, region and country. Today, our collection is remarkably diverse and includes prints, paintings, drawings, sculpture, ceramics, antiquities and contemporary works. It spans thousands of years, from the archaeology of ancient Egypt and Greece to contemporary work created by international artists as well as those working in the North West. Major artists represented include Barbara Hepworth, L S Lowry and Terry Frost.

The Trust initially had a custodial role over the Irene Manton bequest, a substantial holding of artworks bequeathed in 1988 by Professor Irene Manton F.R.S. (1904-1988). The Manton bequest includes Chinese and Japanese watercolours and prints, Twentieth Century British and European works and a small collection of antiquities. In 1994 and then 2002, the Trust received a substantial gift and then bequest of Pilkington Tile & Pottery Company ceramics, designs and related archive material from Miss Mary Chambers. The majority of the collection is housed in the Peter Scott Gallery with further works displayed around the campus including major works of public sculpture.

Our [collection](#) is a very valuable resource, worth far more than the monetary value of the collected works and represents un-tapped opportunities.

# 3

## Role description



### 'Sun and Moon'

(1969), by Barbara Hepworth, coloured etching on wove paper, gift to the Gallery

# 3

## Role description



### Role details

#### Purpose of the role

The Chair of the Peter Scott Gallery Charitable Trust (PSGCT) will lead and chair the Board of Trustees, upholding good governance, ensuring financial resilience and maintaining an environment for sound decision-making.

The Chair also acts as an ambassador and advocate for the PSGCT and Lancaster Arts (LA), helping to strengthen visibility and reputation, whilst championing continued relevance, and increasing national profile and strategic impact.

#### Terms of appointment

- The Chair term is a minimum of 3 years and a maximum of 4 years. A term of office can be extended once so Trustees can apply for a second term.
- The Chair will attend 4 Board meetings per year, hosted as live meetings at the University with online participation, as deemed necessary.
- Specific urgent requests or special matters may be dealt with through emails or online zoom meetings. Any emergency meetings will be held online only to enable maximum participation.
- The Chair will attend an annual Away day
- The role is voluntary and not remunerated other than expenses and relevant costs.

#### Please note

- LAB meetings rotate across campus and on occasion, external venues. There is a preference for live meetings, avoiding hybrid meetings, wherever possible.
- All members are expected to attend at least two-thirds of meetings annually.
- The annual Away Day includes Trustees of the PSGCT, members of the Lancaster Arts Board and the Ideas & Connectors Group and offers space for strategic visioning, reflection and the development of imaginative ideas and solutions.

# 3

## Role description



### Key responsibilities

#### The Chair will:

- Lead the PSGCT to fulfil its Terms of Reference, ensuring the Trust maintains and contributes to the accreditation standards with all relevant policies, plans and documentation over the subsequent Accreditation period to 2028.
- Chair the quarterly Trust meetings. The Curator acts as Secretary for the Trust and the Chair and Curator will work closely together to ensure smooth and transparent management and collective decision-making.
- Support the development of the collection in alignment with the acquisition strategy and alongside the Trust.
- Support the financial resilience of the Trust and ensure we continue to thrive with the capacity to grow and develop the collection, alongside the Trust.
- Foster a collaborative and dynamic Board culture in which members are active, informed, and mutually supportive.
- Act as ambassador for the collection and the PSGCT.
- Liaise regularly with the Director of LA and the University Council appointed Trustee to ensure consistent communications and visions with both the university and Arts Council England.
- Encourage imaginative thinking and creative responsive to change.

#### Board development

- Work with the Curator and LA Director to ensure effective recruitment, induction, and rotation of Board members.
- Contribute to the periodic evaluation of the Board's effectiveness and impact.



Image: Pilkington's Lancastrian Pottery Lustreware vase

# 3

## Role description



### Attributes and experience

The Chair of the Board (PSGCT) will be an arts professional with an international profile and a breadth of scope and understanding of the cultural sector, in particular, museums and galleries.

#### The Chair will have:

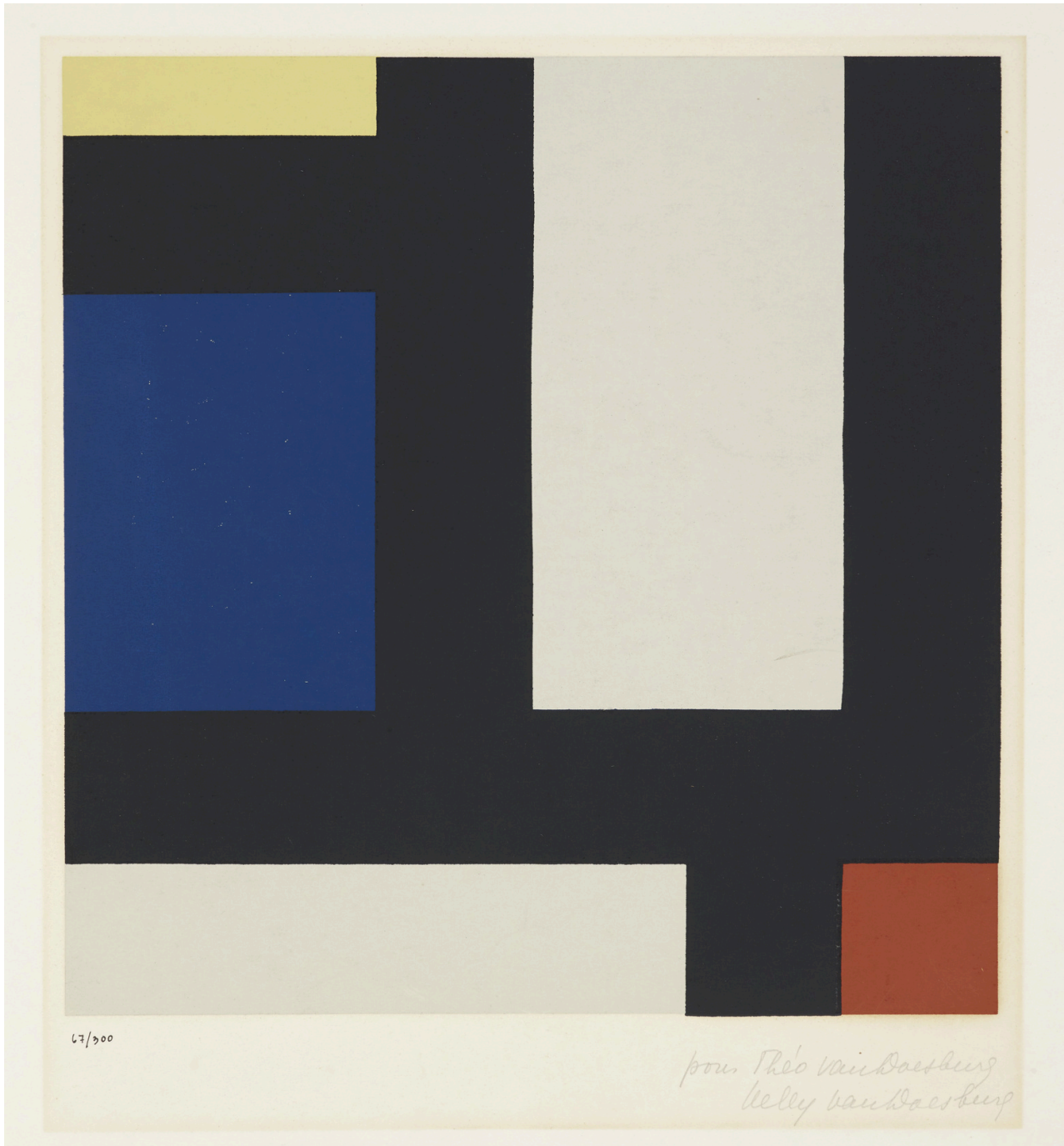
- A strong track record of leadership in the cultural sector. National or international reputation is desirable.
- Prior experience as a Trustee, and ideally with experience of chairing meetings, committees, Boards or events, with a solid grasp of good governance.
- A strategic outlook and the ability to navigate the intersection of Higher Education and the arts.
- Skilled facilitation and communication, with confidence in convening diverse stakeholders.
- A clear commitment to inclusion, environmental responsibility, and socially engaged arts practice.
- Capacity to act as an ambassador and connector for the the Peter Scott Gallery and Lancaster Arts.
- An enthusiasm for Lancaster Arts and an understanding of our work.



Image: How do you make a Queer Ritual? exhibition by Jez Dolan and Garth Gratrix

# 4

## Terms of reference



### 'Composition'

(1953 (original executed in 1924)), Theo Van Doesburg, screenprint, from the Irene Manton Bequest (1988)

# 4

## Terms of reference



### Terms of Reference: Peter Scott Gallery Charitable Trust (PSGCT)

#### Background

The Peter Scott Gallery (PSGCT) is a constituent part of Lancaster Arts, a combined arts organisation and part of the National Portfolio of Arts Council England (ACE) and is integral to Lancaster University. Lancaster Arts (LA) is hosted, funded and governed by Lancaster University as well as answerable to ACE's aims and policies through its status as a National Portfolio Organisation.

An annual strategic plan responds to the vision and objectives of both ACE and the University. The Peter Scott Gallery has been an Accredited Museum since 2009 with responsibility for a university art collection. The collection is diverse and includes prints, paintings, drawings, sculpture, ceramics, antiquities and contemporary works.

The PSGCT was established in 2001, initially to have a custodial role over the Irene Manton bequest, a substantial holding of artworks bequeathed in 1988 by Professor Irene Manton. The Trust works closely with LA to grow and develop the Peter Scott Gallery collection, and the relationship between the University and the Trust is set out in an agreement ratified by both parties.

LA has two tiers of governance that sit alongside the PSGCT:

1. The Lancaster Arts Board (LAB) is comprised of internal and external members and is chaired by a respected figure in the cultural sector nationally. The LAB meets quarterly, and reports to Arts Council England in the same timeframe. It also meets on an annual away day and has specific sub-groups. The LAB sends an annual Assurance Report to the Council, the University's governing body.
2. The Ideas & Connectors Group is comprised of a diverse range of people and acts as a sounding board to Lancaster Arts; meeting 3 times a year.

# 4

## Terms of reference



The LA Director is responsible for the artistic direction and operational resilience of LA; the Curator forms part of the LA Senior Leadership Team and is responsible for the collections and their development and is the Secretary for the PSGCT. The Museum works with staff and volunteers – staff roles are set out and monitored through LA and Lancaster University's staff management processes. Volunteers work with LA in different roles; Gallery Volunteers working for the Museum are managed by the Assistant Curator.

The PSGCT plays a critical role in overseeing and developing the collection and ensures compliance with Accreditation guidelines. A Collection Strategy and Forward Plan has been agreed for the period of 2023 to 2026. This will be renewed with the appointment of new Trustees.

### Terms of Reference

- PSGCT meetings will be held quarterly and hosted as live meetings at the University with online participation, as deemed necessary. Specific urgent requests or special matters may be dealt with through emails or online zoom meetings. Any emergency meetings will be held online only to enable maximum participation.
- There will be an annual away day with the LAB and Trustees will be invited to join a portion of this day to enable governance to be coherent across the combined arts organisation.
- Term of office is a minimum of 3 years and a maximum of 4 years with a process of rotation to enable new trustees to join who offer broader representation. A term of office can be extended once so Trustees can apply for a second term.
- PSGCT Trustees manage the resources of the Trust in line with the objects set out in the original declaration of Trust and objectives set out in the current Collection Strategy and Forward plan and Collection Development policy. The Curator is supported to ensure a timely and accurate submission of annual Charity Commission returns, and the development and delivery of policies and plans to meet and maintain Accreditation standards.
- PSGCT Trustees support and shape the future of the University art collections within LA's wider strategic direction, including taking decisions around developing the collections and their management.
- PSGCT Trustees will be expected to attend a minimum of 2 meetings a year and attend LA and Gallery events and exhibitions.
- PSGCT Trustees will act as ambassadors for the visual arts programme and management of the collection, bringing new and fresh ideas for its vision and direction and advocating on its behalf to external bodies and individuals.

# 4

## Terms of reference



### Trustee membership

The number of Trustees will comprise 5, including 1 appointed by the University (currently the Executive Dean of the Faculty of Arts and Social Sciences) and 4 recruited by the Trustee group.

The Chair of the PSGCT will be an arts professional with an international profile and a breadth of scope and understanding of the cultural sector, in particular, museums and galleries.

The PSGCT must reflect the rich diversity of the northwest and ensure there are a range of perspectives to draw upon in our governance. We are committed to attracting and recruiting more representative candidates, in particular disabled, D/deaf and/or neurodivergent people and those from Black, Asian and ethnically diverse backgrounds. We particularly encourage Expressions of Interest from people in these groups.

A breadth of membership will be sought to include the following knowledge, skillsets and aptitudes:

- A diversity of age and an equitable balance of gender
- Strong connections to local communities (of place and interest)
- Strong connections to international opportunities within the museum sector
- Museum specialism at a high level
- Practicing artists
- Academics in the field of visual arts
- Knowledge of the funding ecologies (within the university and external)

# 5

## How to apply

Image: How do you make a Queer Ritual? exhibition by Jez Dolan and Garth Gratrix



# 5

## How to apply



Lancaster Arts is working exclusively with Charisma Charity Recruitment.

Expressions of interest should be submitted through the [Charisma website](#) and include:

- A comprehensive CV
- A supporting statement (no more than two pages) summarising why you're applying and how you meet the person specification

For an informal and confidential discussion about the role, please contact:

Katherine Anderson-Scott, Executive Director of Charisma Charity Recruitment on 01962 813300 or email [info@charismarecruitment.co.uk](mailto:info@charismarecruitment.co.uk).

Charisma welcome and encourage expressions of interest from people of all backgrounds. We do not discriminate on the basis of disability, race, colour, ethnicity, gender, religion, sexual orientation, age, veteran status or other category protected by law.

**Closing date: Thursday 13th August 2026**

**Interviews with Peter Scott Gallery Charitable Trust: from 1st September 2026 onwards**

**Charisma vetting interviews must be completed by EOD on 20th August prior to shortlist submission on 21st August.**



**charisma**  
CHARITY RECRUITMENT