



Source Technology

#DiscoverTechPotential



Part of Source
Group International

About Nike.

NIKE, Inc. is a team comprised of the Nike, Jordan and Converse brands driven by a shared purpose to leave an enduring impact.

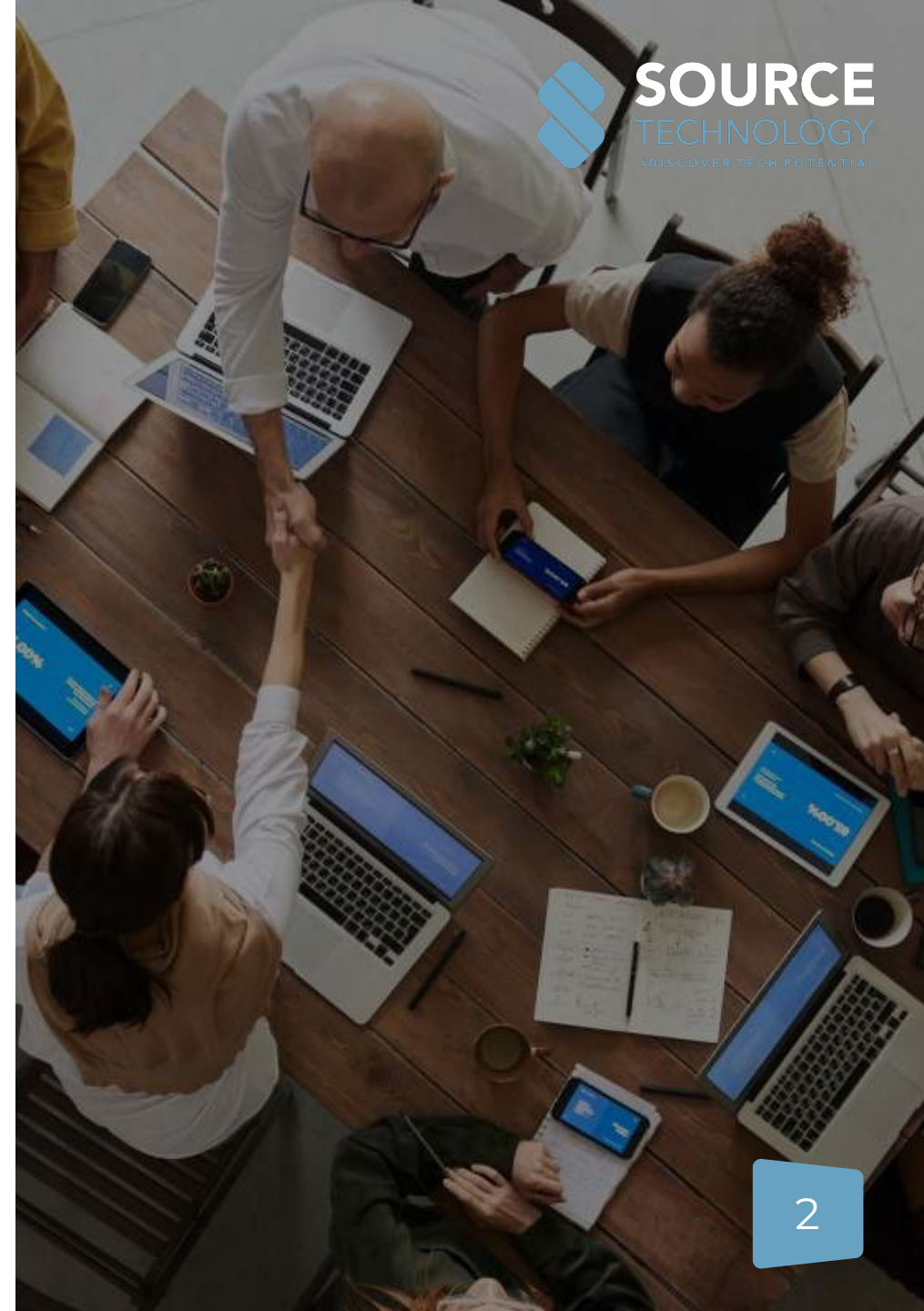
With a global footprint, culture of innovation and team-first mentality, we take action to create a future of continual progress for athletes, sport and our world.

At a Glance:

- **43%** of NIKE's leadership positions are held by women.
- **78%** renewable energy in owned or operated facilities, up from 48% in FY20.
- **\$97.7M** invested in NIKE, Inc.'s fiscal year 2021 to drive positive impact in communities around the world.



@SourceTechnology



#DiscoverTechPotential

The Challenge

- One of our contacts at Nike came to us with a request for a **Tableau Developer and an Alteryx Developer** within the same team as they had lost a team member responsible for both areas and were left with a lack of knowledge and support.
- When SGI became involved, the **positions had been open for some time** and they were **not able to find the right level of experience** on both the consulting and technical side.
- The challenge consisted of **finding professionals who had the functional, consulting and technical knowledge and experience.** New team members that could be hands-on but also coach the team members lacking the knowledge to create a strong team.

Challenge

Solution

Results



@SourceTechnology

#DiscoverTechPotential

How We Supported

- We **reviewed the job description** and had an in-depth conversation with the hiring manager.
- We suggested changes to the job description.
- Ensuring that it only contained **essential information** and **focused more on the specific of expertise** that were required.
- Thereafter, we agreed on SLAs with the hiring manager, proceeded to present several candidates in a matter of days and arranged the interviews.



@SourceTechnology

Challenge

Solution

Results

#DiscoverTechPotential

The Results

- Our candidate, **Hannah Volbeda** was swiftly **chosen by Nike** as the right person for the Alteryx role.
-
-
-
- Ultimately Hannah started within the Tableau area, until we introduced **Gijs Reysoo who took over the Tableau** work from so Hannah could focus on Alteryx.
- Gijs is now also learning Alteryx from Hannah.
- Thereafter, SGI **delivered a suitable Scrum Master, Data Analyst and Machine Learning Engineer** for a few different teams based in the Netherlands.



@SourceTechnology

Challenge

Solution

Results



Part of Source
Group International

#DiscoverTechPotential

Get In Touch



Source Technology,
Part of
Source Group
International Ltd.

[Check Out
Our Website](#)

[Email Us](#)

[Connect On
LinkedIn](#)